

FAST - Suspect stroke in children:

All children with suspected stroke should be managed using the regional pathway and discussed early with specialist teams.

Face
New facial droop

Arms
Arm weakness

Speech
Difficulty with speech

Time
Consider STROKE → initiate protocol

Additional childhood stroke symptoms:

- Sudden, severe headache
- Seizures (fits)
- Sudden vertigo, dizziness, or confusion
- Problems with walking or balance
- Nausea, vomiting, drowsiness, or loss of consciousness
- Sudden blurred vision or loss of sight in both eyes
- Weakness or numbness on one side of the body
- Changes in sensation (pins and needles)

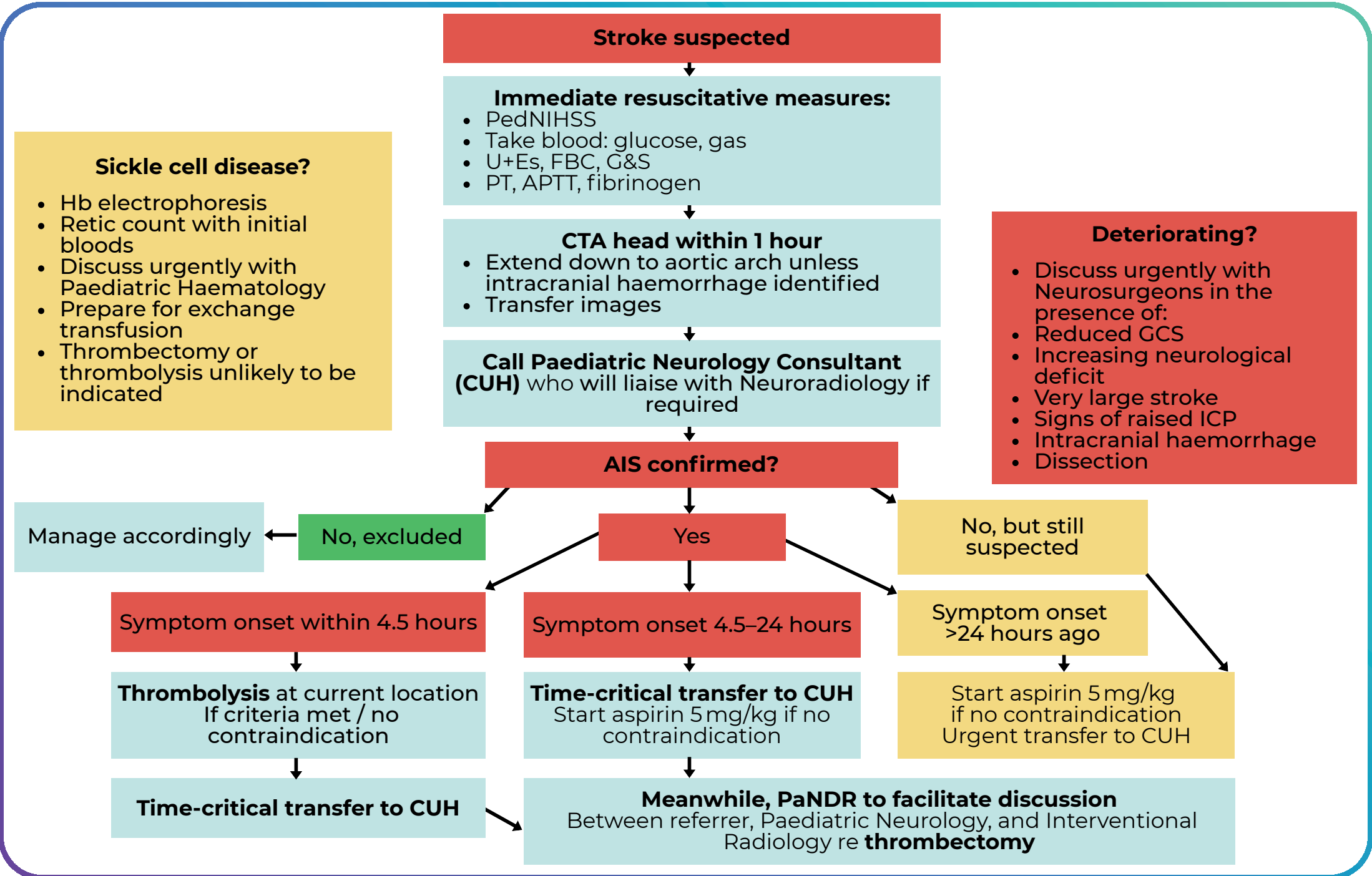
Suspected stroke is a time-critical emergency → initiate the regional pathway.

Scan QR code to access the East of England Paediatric Stroke Guideline.



For use in Emergency Departments, paediatric wards, and ambulance services.

Flowchart for management of suspected stroke:



For full clinical detail, refer to the East of England Paediatric Stroke Guideline (QR code).

Specialist services involved in the pathway:

- Paediatric Neurology, Cambridge University Hospitals
- Paediatric and Neonatal Decision Support and Retrieval Service (PaNDR)
- East of England Paediatric Critical Care Operational Delivery Network (PCC ODN)
- Eastern Paediatric Epilepsy Network (EPEN)

- 📞 CUH Switchboard: 01223 805000
- 📞 PaNDR 24-hour Referral Line: 01223 274274
- 🌐 www.pandreastofengland.co.uk
- 🌐 www.eooneonatalpccsnet.nhs.uk
- ✉️ PCC - add-tr.eoepccodn@nhs.net